

# Modifying Odometer on White Faced Festiva Cluster w/ Tach

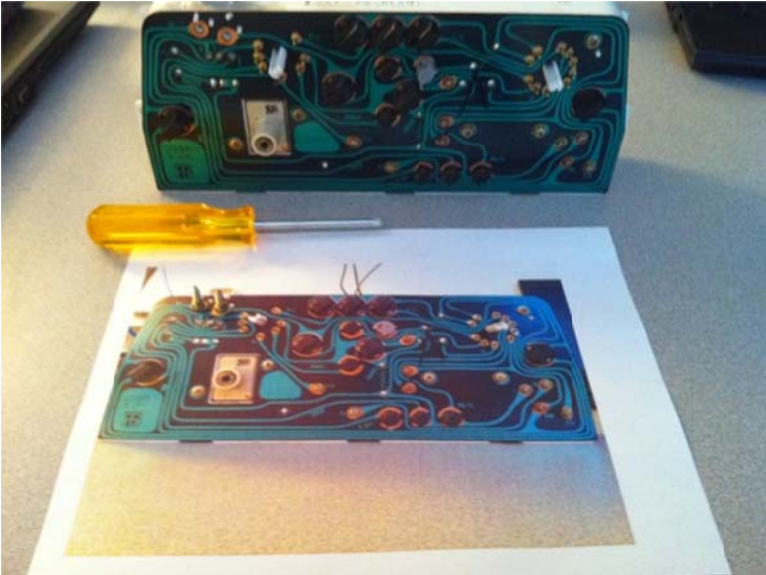
**\*\*This procedure is not intended for illegal activities and should only be used as a reference. At no point should any odometer be modified to show lower mileage on a vehicle than it currently has. Follow this procedure at your own risk, I am not liable for anything you do.\*\***

OK, so in my instance, I had a '92 Festiva with 102,494 miles on it. I only had the white faced speedometer and really wanted the tach and trip meter. Finding one for sale online, I purchased it and it arrived with 155,790 miles on the odometer. I wanted to keep the mileage accurate with the car, so this is what I did to modify the odometer to match my existing speedometer only cluster.

1. Remove the 2 screws holding the red & black light wires to the back of the circuit board.

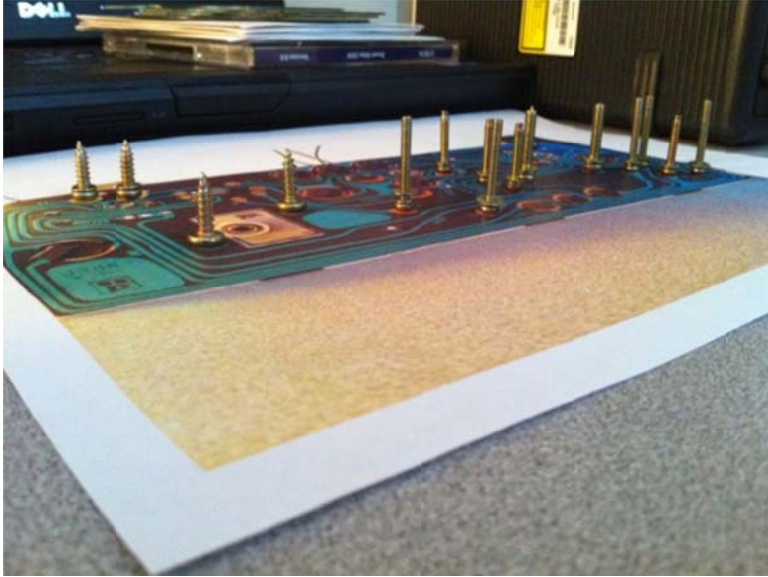


2. Take a picture of the back circuit board of the cluster and print it out on a piece of 8.5x11 paper. Set the paper down on your work table. You will use this to place your screws on and keep track of what screw goes where.

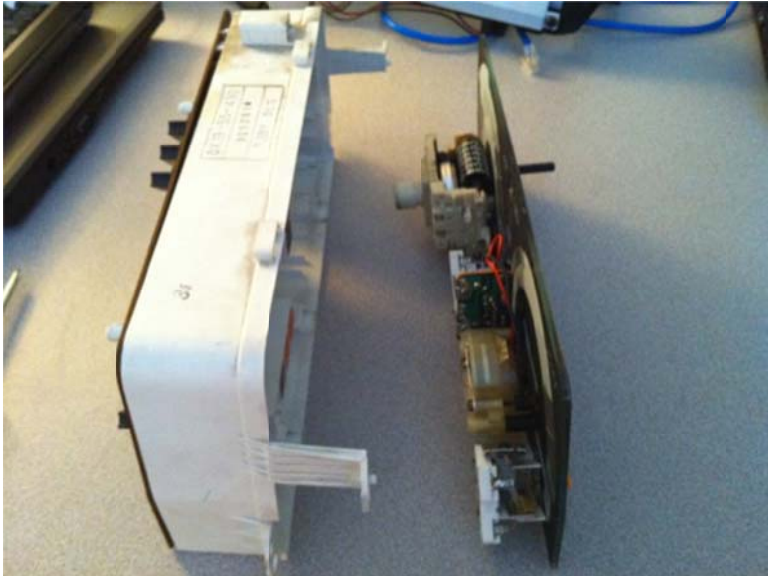


3. You now want to remove the plastic clear face of the cluster. This is easily done by pressing to release the 3 clips on the bottom of the cluster, tilting it outwards and doing the same on the top of the cluster.

4. Remove all the screws from the back of the cluster on the circuit board. Place each screw in its correct location on your printed out piece of paper.



5. Once all screws are removed, you can now separate the speedometer / tach face from the white plastic housing.



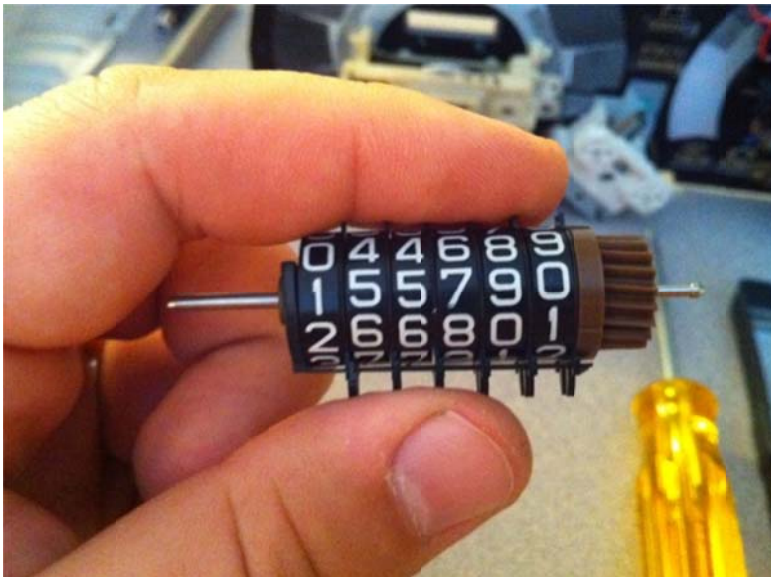
6. In the back of the speedometer you will see where the odometer is located. Take a sharp knife and heat it up using a lighter. With it hot, start to melt away the plastic on TOP of the left pin holding the odometer in place.



7. The odometer bar will now pop up on the left side, and pull out from the right side.



8. You should now be holding your odometer as shown.





9. Remove the little black plastic clip that keeps all the numbers aligned. This will give you enough space to separate the numbers and spin them to their correct position. Start from the right hand side of the odometer and work your way left. Keep the numbers as straight as possible and make sure you keep all the plastic tabs in between each number pointed in the same direction as well. This can be tricky so take your time. Use the plastic clip you removed as a guide to keep the plastic tabs between the numbers straight while you spin them.



10. Once you have the correct odometer reading, re-install the plastic clip.



11. Now reverse the steps you did to remove the odometer. Put the right side back in and click the left side back down into place.

12. Verify by looking thru the front of the speedometer to make sure that the odometer is lined up correctly.



13. With the odometer correctly in position, re-heat up your knife and work the plastic back down over top of the odometer bar to hold it in place.



14. Recheck by looking at the front of the cluster to make sure everything looks right.



15. Slide the speedometer face back into the white plastic housing and re-install all the screws. This is where the prep work of carefully noting where each screw goes back is helpful.
16. Lastly, clean the clear plastic front both inside and out, and re-clip it back into position.



17. Reconnect the 2 light wires (red & black).
18. DONE!

Hopefully this helps someone out there!